

Welcome to the October edition of our Histology Newsletter.

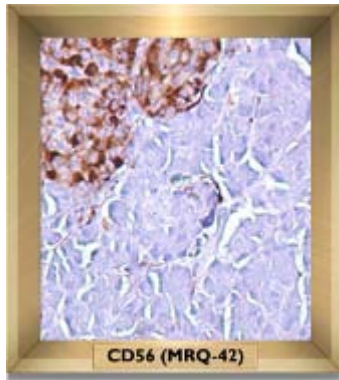
Below you can find information on new products, news articles and Technical Tips.

Be sure to take a look at our Upcoming Conferences and Interesting Facts!

Inside this issue:

- New Products
- Histology News
- Technical Tips
- Upcoming Conferences
- Interesting Facts

NEW PRODUCTS



Cell Marque releases a new CD56 (MRQ-42) rabbit monoclonal antibody

One of the most significant differences between this new rabbit monoclonal and existing CD56 antibodies is that MRQ-42 stains natural killer cells and NK/T Cell Lymphomas.

Benefits of the new MRQ-42 rabbit monoclonal antibody include:

- increases the sensitivity and staining quality of small cell lung carcinomas and neuroendocrine tumours
- produces strong signals for both smooth muscle and NK cells
- solves the shortcomings that have plagued the mouse monoclonal versions of CD56



T-bet antibody (rabbit monoclonal).

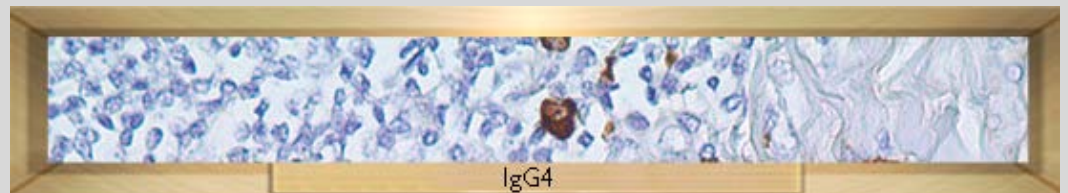
T-bet is a nuclear stain that differentiate mature B-cell lymphomas (T-bet +) including CLL/SLL, marginal zone lymphoma, and hairy cell leukaemia, from lymphomas derived from pre-germinal or germinal B-cells (T-bet -) such as mantle cell lymphomas, follicular lymphomas, and Burkitt's lymphomas.

Sizes as follows:

Description	Part #
0.1ml concentrate	368R-74
0.5ml concentrate	368R-75
1.0ml concentrate	368R-76
1.0ml predilute	368R-77
7.0ml predilute	368R-78
5 + control slides	368S



Antibody IgG4



An increase in volume of IgG4 positive plasma cell infiltration is useful in the diagnosis of sclerosing diseases of various organs including, but not limited to, the pancreas, bile duct, gallbladder, salivary gland, lung, kidney and prostate. In addition to an increase in the number of IgG4 positive plasma cells, percentage interpretations can also be indicative of sclerosing diseases; IgG4 positive plasma cells are 30% more likely to be present in affected tissue than IgG positive plasma cells.

For more information on any of the New Products above, please contact: info@abacus-als.com

For all of your Histology needs, please contact Abacus ALS

Email: info@abacus-als.com Internet: www.abacus-als.com

FreeCall: (AUS) 1800 222 287 (NZ) 0800 222 170

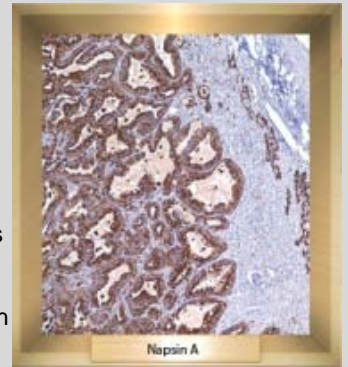
News

Spotlight on Napsin A - Update for the Oncology and Pathology departments

Recently we reviewed Napsin A in the 'Antibody of the Month' mailing which was well received, thanks for the positive feedback!

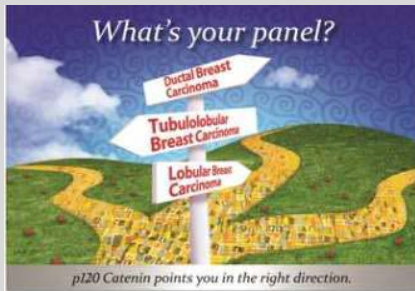
In addition to the information provided in the flyer, Cell Marque would like to share some valuable facts about this antibody which show how diagnostically beneficial it can be for pathologists:

It is important when prescribing anti-cancer drugs like bevacizumab for non-small cell lung carcinomas, a distinction between lung adenocarcinoma and lung squamous carcinomas can be made. These drugs are not to be prescribed to patients with lung squamous carcinomas as it is unsafe and can cause hemoptysis. The pathology lab now has the ability to distinguish between the two types of non-small cell lung carcinomas with the Napsin A antibody. Napsin A, like TTF-1, distinguishes lung from breast (something that Cytokeratin 7 won't do) and is positive in well differentiated lung adenocarcinoma, making it the perfect complement to TTF-1. The use of both antibodies are included in a panel with Cytokeratin 5/14 to establish distinction between lung adenocarcinomas (Napsin A+, TTF-1 +/-, CK5CK5/14 -) from lung squamous carcinomas (Napsin A -, TTF-1 -, CK5/14+)



NEWLY RELEASED Cell Marque rabbit monoclonal CD1a

This antibody marks Langerhans cells (dendritic cells in the epidermis that are also positive for S-100) and thymocytes. CD1a is used with s-100 to diagnose Langerhans cell histiocytosis and to distinguish it from follicular dendritic cell tumors that are CD21, CD35, and CNA.42 positive. CD1a is also used to distinguish langerhans cell histiocytosis from other histiocytic proliferations, such as xanthogranuloma (CD68+, Factor 13a+). CD1a negativity helps distinguish cutaneous B-cell lymphoma from pseudolymphoma and T-cell lymphoma. CD1a has had limited options in terms of clones that work in formalin fixed paraffin embedded tissues, and those mouse monoclonal antibodies have had low sensitivity, low titers, and weak immunoreactivity. Hence the development of the new rabbit monoclonal CD1a, which has a high sensitivity and strong staining by comparison.



p120 Catenin Panel

p120 Catenin is a membrane-localized protein that, in the event of a lobular breast carcinoma, detaches from the membrane and becomes localized in the cytoplasm.

High expression of p120 may indicate poor prognosis in lung adenocarcinoma, bladder cancer, and pancreatic cancer



Vector FREE Instructional Video Tutorials

Did you know that you can view free online video tutorials on tissue staining and labeling techniques?

To view tutorials please visit: <https://www.vectorlabs.com/tutorials.aspx>



Technical Tips

Control Tissue Uses:

- Positive: Used to verify reagents were applied properly and that the staining protocol was performed correctly. Guards against false negative staining.
- Negative: Used to indicate nonspecific background staining. Guards against false positive staining. Indicates a lack of specific antibody staining.
- Internal: Verify reagents were applied properly. Verify tissues were processed correctly.
- MTC (Multi-Tissue Control): Antibody specificity. Detects false positive and negative staining. Used for titration/validation

Control Tissue Test For:

- Sensitivity: To ensure that antibody or detection system is sensitive to small amounts of antigen. Use tissue with weak positive staining.
- Specificity: To show absence of specific staining in cells. Use a negative tissue control.
- Precision: To monitor all steps of the analysis. Use a control containing both positive and negative staining cells.
- Accuracy: To evaluate nonspecific staining and background. Use a negative reagent control in place of the primary antibody.

We're Exhibiting...

You are invited to visit Abacus ALS at AACB / AIMS Combined Scientific Meeting:

When: 25th - 29th October

Where: Perth Convention & Exhibition Centre

Interesting Facts...

Did you know?

The human body has between 50 trillion and 100 trillion cells.

Robert Hooke saw and named cells from seeing them in a piece of cork.

The body of knowledge about cells currently doubles about every seven years.

To request printed literature, please contact marketing@abacus-als.com